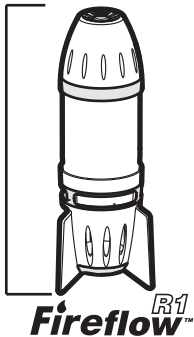
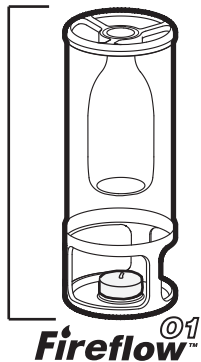


**MATHMOS**<sup>®</sup>  
*Fireflow*<sup>™</sup>

240 mm



270 mm



# WARNINGS !!

**Never use for more than 3 hours at any one time as the product will become dangerously hot.**

**Never touch the bottle or metal parts whilst the product is in operation as they become very hot.**

**Always allow one hour after use to let the product cool down before touching it or the tea light.**

**Please allow the metal parts and the bottle to cool completely before using again to avoid overheating.**

Never move or shake the bottle when in use or for one hour afterwards as this will cause irreparable clouding.

Use only the small 3 hour tea lights as the long lasting ones will burn for too long.

Please use a new tea light every time you use the product to avoid changing it whilst mid operation.

Please clean the base of the bottle before use every time to clear any soot that the tea light may have deposited onto the bottle.

Do not leave the product unattended with small children or animals.

The contents of the bottle are not dangerous and can be disposed of normally.

Should the liquids be spilled onto the skin or come into contact with the eyes pour on cool water, if symptoms appear please visit the doctor.

**THIS IS NOT A TOY**

**Position:**

On a level surface in room temperature between 20 and 24°C and (69-75°F).

Do not place on carpets or block the ventilation spaces beneath the lamp.

**Keep away from;**

Children & animals

- To prevent breakage

Sunlight

- To prevent fading

Draughts

- To prevent slow operation and candle going out

**FireFlow R1 setup:**

1. Place the round metal insert into the designated position in the base, as illustrated.
2. Place the bottle on top and the metal cap on top of the bottle.
3. Light the tea light and insert it into the opening in the base.

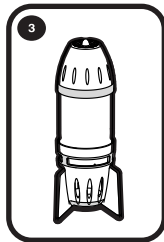
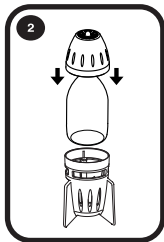
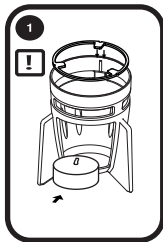
**FireFlow 01 setup:**

1. Put the metal collar provided around the neck of the bottle.
2. Holding securely, screw the collar with the bottle into the cap.
3. Place the glass cylinder on top of the metal base, ensuring a secure fit.  
Place the cap, with secured bottle, on top of the glass cylinder.
4. Light the tea light and insert it into the opening in the base.

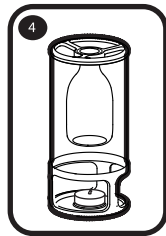
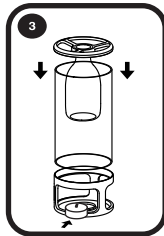
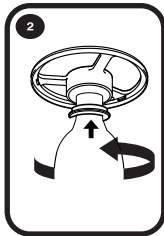
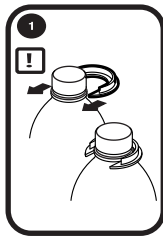
**Warm up:** Between 20 – 40 minutes depending on the surrounding temperature and the brand of tea light used.

**Turn Off:** After 3 hours use, or before, gently blow the tea light out without touching the product as it will now be hot.

**Fireflow<sup>R1</sup>**

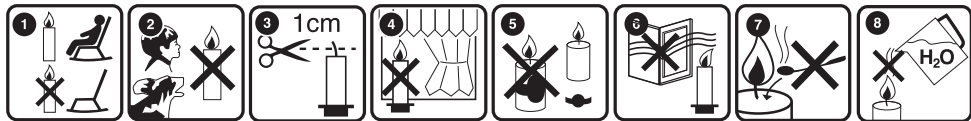


**Fireflow<sup>01</sup>**



# Use of Candles

**Always read and follow manufacturer's instructions supplied with candles.**



**1. Never leave a burning candle unattended.**

**2. Burn the candle out of the reach of children and pets.**

**3. Trim the wick to about 1cm (1/2") before lighting.**

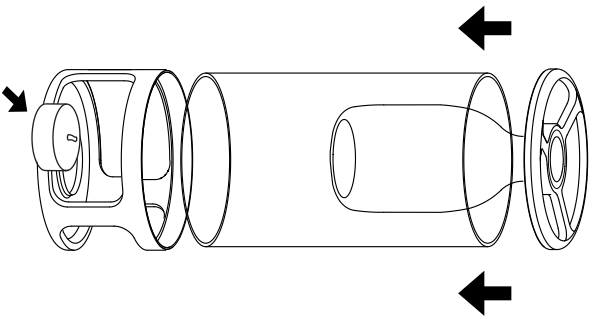
**4. Do not burn candle on or near anything that can catch fire.**

**5. Remove all packaging before use.**

**6. Do not place candles in a draft.**

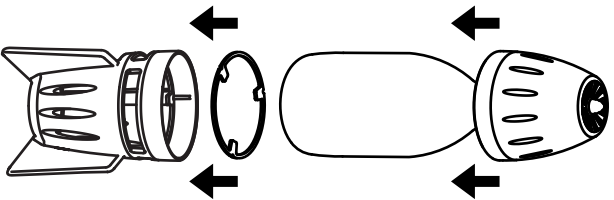
**7. Keep the wax pool clear of matches and other debris to avoid flaming.**

**8. Do not use water to extinguish the flame. If the candle overheats and flares, cover with a damp cloth.**



**Fireflow** ©1™

 **ATHMOS**<sup>®</sup>  
*Fireflow*<sup>™</sup>



**Fireflow**<sup>™</sup> **R1**